

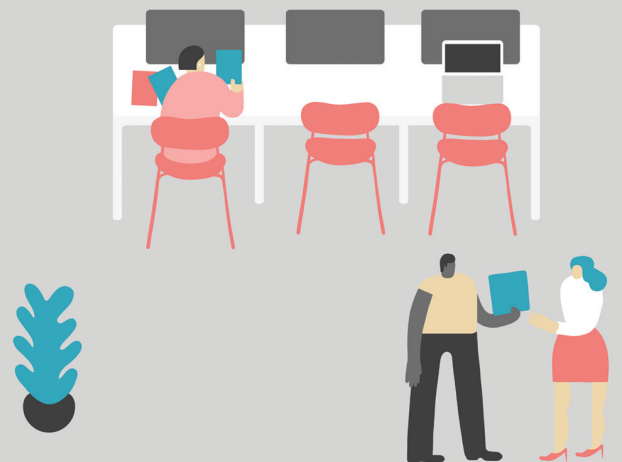
modus



Modus is a highly respected, award-winning contemporary furniture brand, designing, manufacturing and selling its own ranges for home and commercial use.

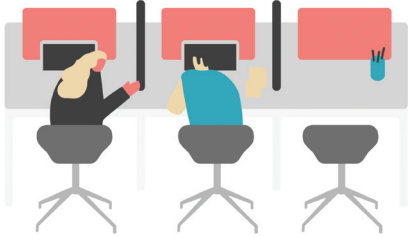
Clients include multi national companies, British icons, architects, office and workspace interiors and luxury hotels around the world. We work with some of the world's most renowned designers to produce furniture of an exceptionally high standard in terms of design and quality whilst keeping our footprint as light as possible.

We are an established team of dynamic professionals working in a fast paced, stimulating environment in fabulous, architect designed, custom built offices and production facilities set in one of the most scenic rural locations you could imagine.



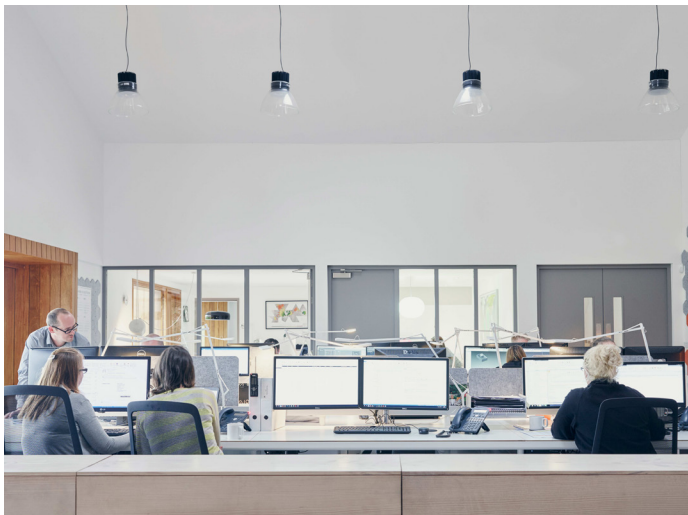
We are Hiring

Development Engineer



Job Description

Liaise with Design and Operations departments to ensure smooth introduction of new products to manufacture alongside continuous improvement of current collection.



Perks

You will be part of a dynamic, highly-motivated, growing team of individuals working within one of the most highly respected British design brands with an open, progressive and forward looking attitude. You will be working in a stunning, rural environment with fabulous views over rolling countryside in a large, light, bright, beautifully designed, open office workspace. You will have access to a fun social calendar, pension and private healthcare.

Your role will include

- Maintaining high standards of engineering drawings and design BOMS
- Managing change by updating design BOMs and drawings and liaising with Operations to ensure manufacturing BOM integrity
- Continuous review of products for lean production and engineering improvements to drive profitability
- Producing and controlling manufacturing drawings for client orders and liaising with clients through to Operations and Production
- Developing working prototypes for Design department, clients, Sales and Operations
- Producing 3 and 5 axis CNC drawings/programmes for manufacture for both joinery and upholstery



- Researching materials and processes to ensure product is continually updated
- Developing technical specification, SOPs and quality standards for all products and packaging in the collection
- Training quality standards throughout production
- Ensuring introduction of products, specification and quality to Operations including pre-production handovers and sign-off
- Establishing plan and reporting to ensure monitoring of plan and improvements

You need

- Experience in furniture design/design engineering; 3-5 years' experience in a manufacturing environment
- A degree in furniture design, industrial design, product engineering or similar
- Proficient 2D and 3D CAD Skills (preferably Autodesk suite – AutoCAD and inventor)
- Experience in CNC 3 and 5 axis programming preferable
- Knowledge of upholstery production and/or joinery preferable
- Knowledge of Sage manufacturing or a similar MRP/ERP system would be beneficial
- An understanding of modern manufacturing methods and lean manufacture

You need to be

- A creative thinker with the ability to spot solutions to manufacturing issues
- Methodical and analytical
- Able to think strategically, with a creative mindset
- Able to communicate with a broad spectrum of people
- Persuasive and encouraging
- Passionate and energetic
- An excellent communicator both oral and written

Interested?

Please send your CV and current salary package to Jobs@modusfurniture.co.uk