

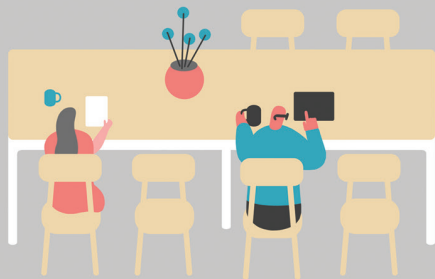
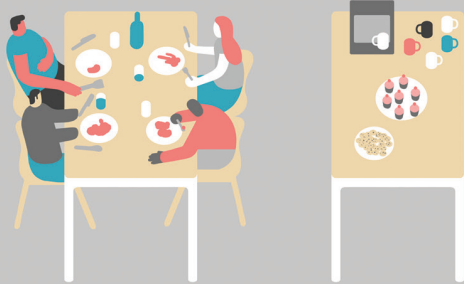
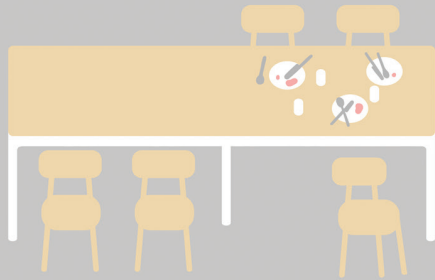
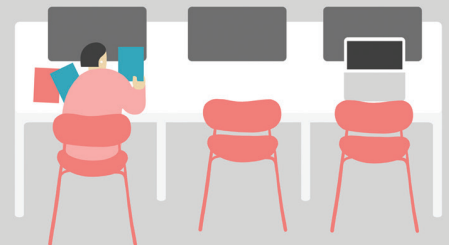
modus



Modus is a highly respected, award-winning contemporary furniture brand, designing, manufacturing and selling its own ranges for home and commercial use.

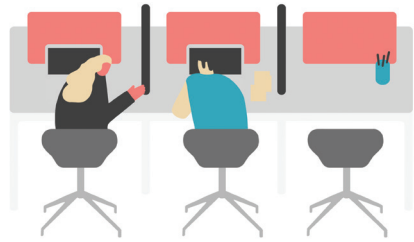
Clients include multi national companies, British icons, architects, office and workspace interiors and luxury hotels around the world. We work with some of the world's most renowned designers to produce furniture of an exceptionally high standard in terms of design and quality whilst keeping our footprint as light as possible.

We are an established team of dynamic professionals working in a fast paced, stimulating environment in fabulous, architect designed, custom built offices and production facilities set in one of the most scenic rural locations you could imagine.



We are Hiring

Design & Marketing Intern



Job Description

Provide support for the Design department through a variety of channels including digital, web, design software and other as assigned. Assist with the development and design of products and a variety of other creative tasks as assigned.



You Need Experience In

- A good understanding of Adobe CC – Illustrator, Photoshop and In-Design
- Social Media and Web Content Management
- Production of Product Literature
- CAD(2-D and 3-D) using the Autodesk Suite – AutoCAD, Inventor, 3D Studio Max

Interested?

Please send your CV and current salary package to Jobs@modusfurniture.co.uk

Perks

You will be part of a dynamic, highly-motivated, growing team of individuals working within one of the most highly respected British design brands with an open, progressive and forward looking attitude. You will be working in a stunning, rural environment with fabulous views over rolling countryside in a large, light, bright, beautifully designed, open office workspace.

Your Role Will Include

- Product Marketing
- Company Marketing
- Product Development of Brand Product
- Floor/Space Planning of Projects
- Development of Bespoke Product for Projects
- Production support
- Production of manufacturing drawings and documentation
- Technical and Sustainability Documentation
- Possible working on the logistics and set-up of Shows/ Exhibitions